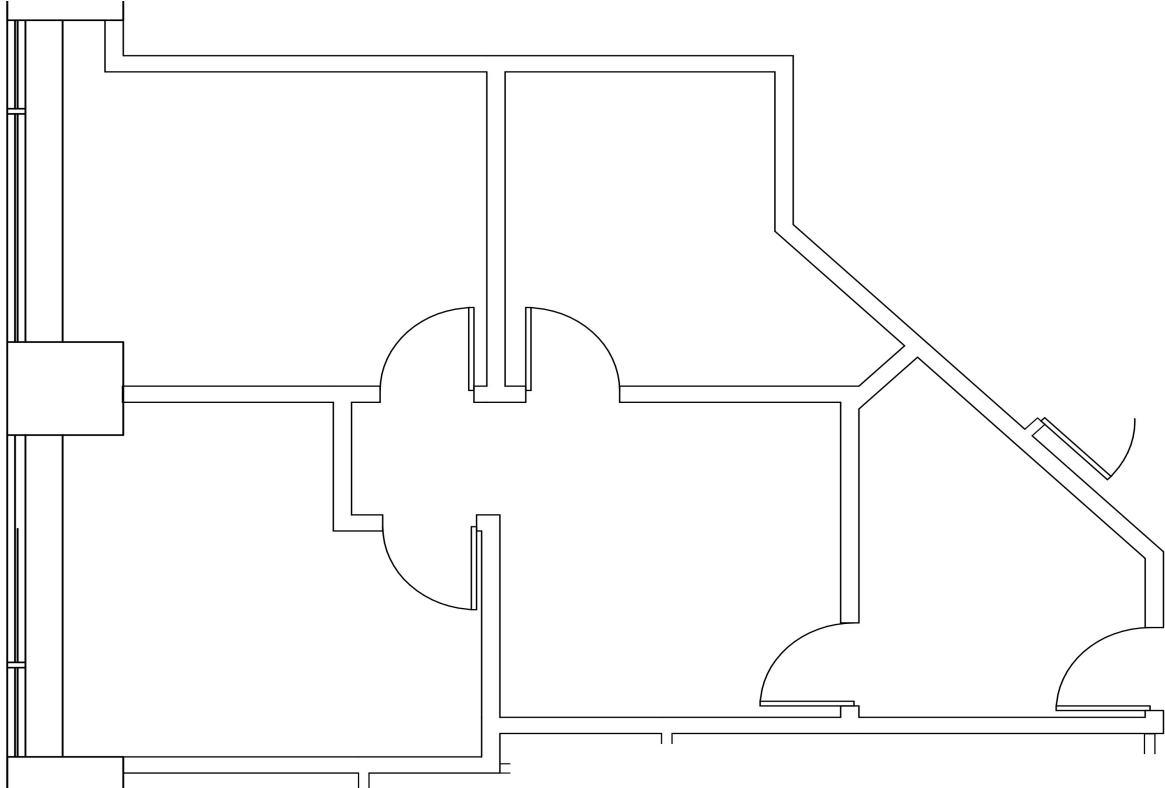


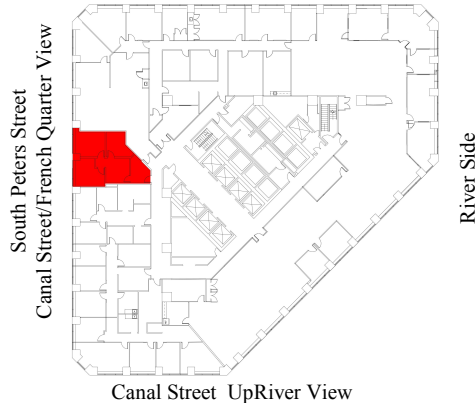
ONE CANAL PLACE

365 Canal Street
New Orleans, Louisiana 70130

FLOOR 16 SUITE #1690 – 865 RSF



Iberville Street (Downriver View)



CONTACT:



CORPORATE REALTY

Andrea A. Huseman CCIM, CREW
Phone: 504/587-1450
Fax: 504/587-1453
www.corp-realty.com

Jan 5, 2015