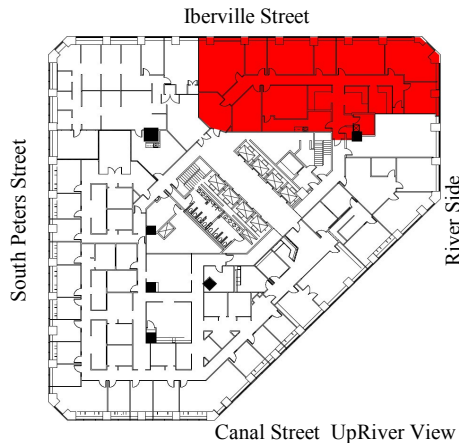
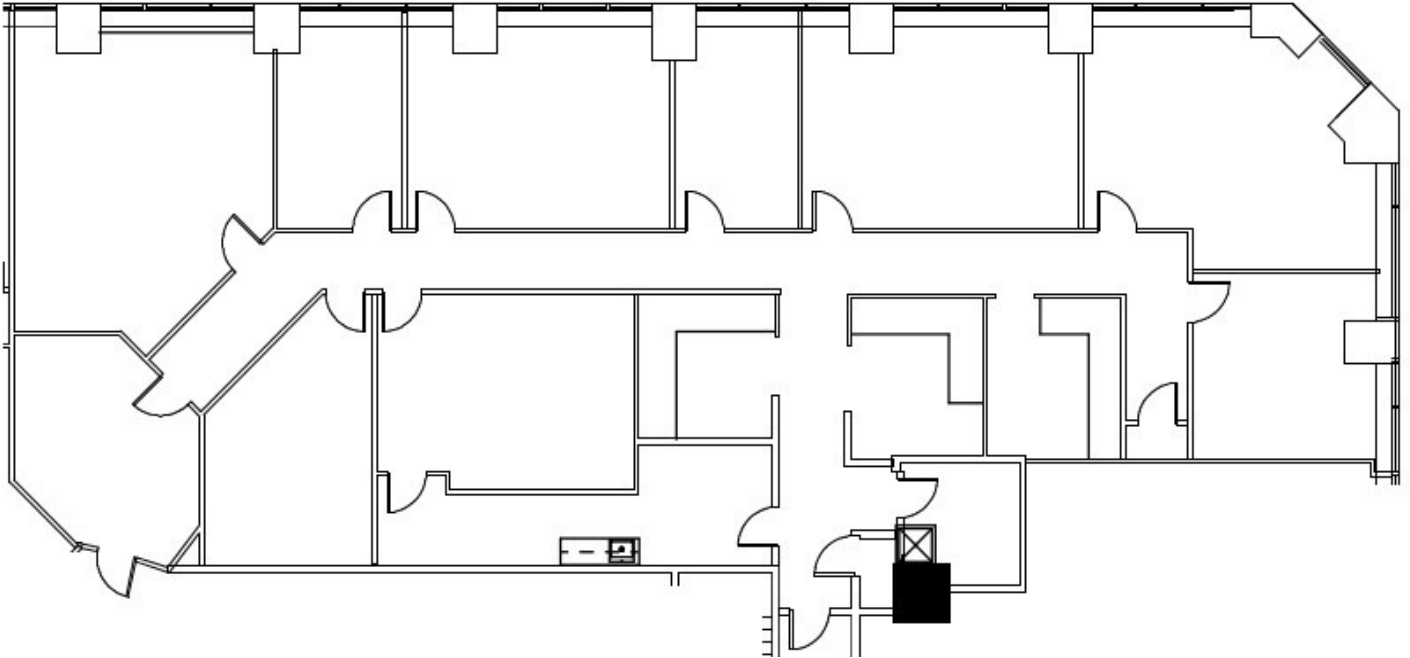


ONE CANAL PLACE

365 Canal Street
New Orleans, Louisiana 70130

FLOOR 25 SUITE # 2520 – 4,672 RSF



CONTACT:



CORPORATE REALTY

Andrea A. Huseman CCIM, CREW

Phone: 504/587-1450

Fax: 504/587-1453

www.corp-realty.com

November 04, 2014

Canal Street UpRiver View