

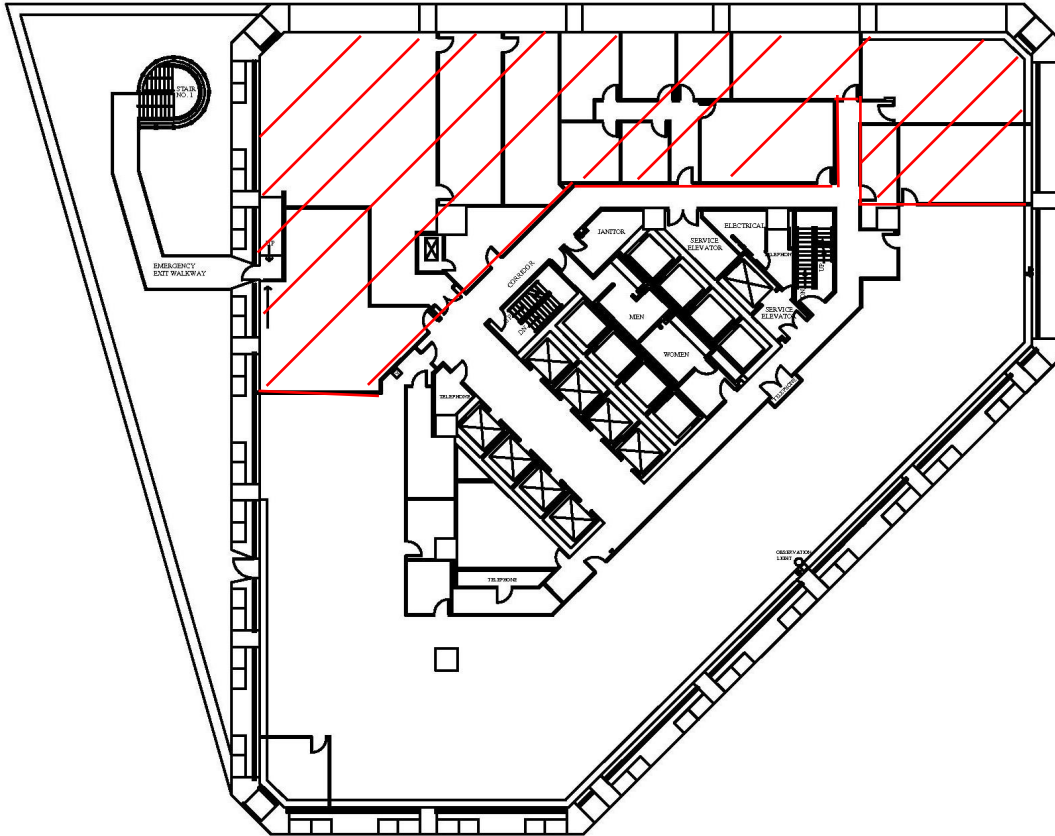
# ONE CANAL PLACE

365 Canal Street  
New Orleans, Louisiana 70130

**FLOOR 5 SUITE #550 – 9,538 RSF**

**(WHOLE FLOOR)**

**RSF TO BE REDUCED WITH ADDITION OF  
WRAPAROUND CORRIDOR**




Iberville Street (Downriver View)

South Peters Street  
Canal Street/French Quarter View

River Side

Canal Street UpRiver View

**CONTACT:**



**CORPORATE REALTY**

Andrea A. Huseman CCIM, CREW  
Phone: 504/587-1450  
Fax: 504/587-1453  
[www.corp-realty.com](http://www.corp-realty.com)

April 13 2012