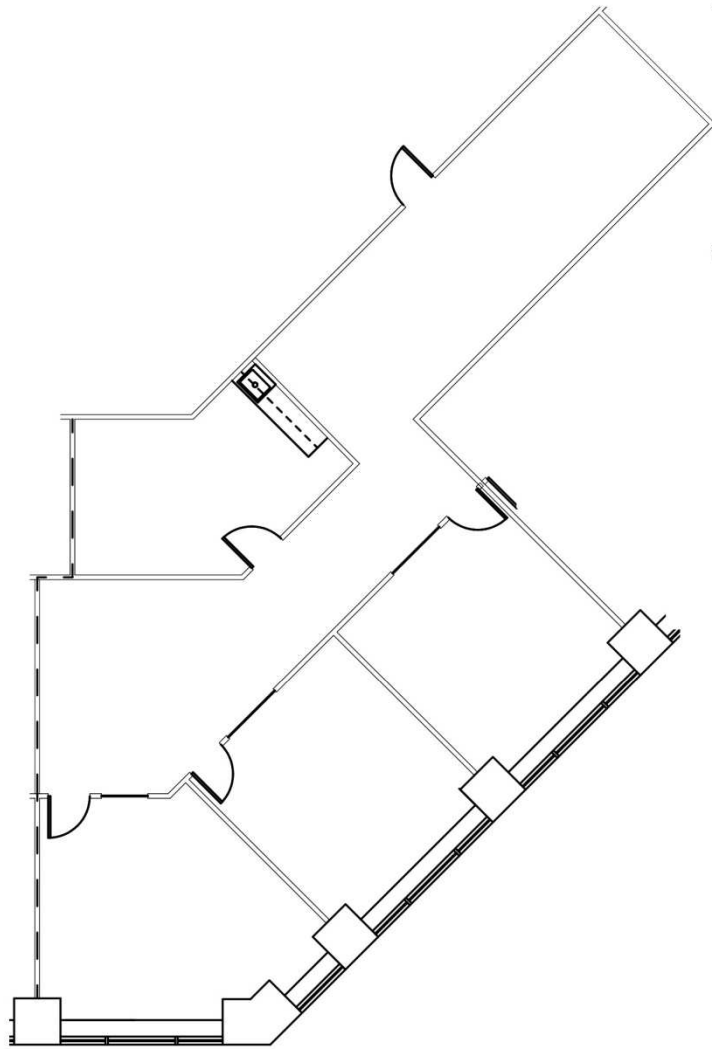


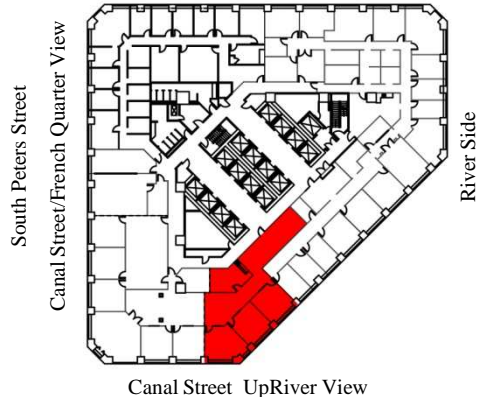
ONE CANAL PLACE

365 Canal Street
New Orleans, Louisiana 70130

FLOOR 17 SUITE #1700 – 2,103 RSF



Iberville Street (Downriver View)



CONTACT:



Andrea A. Huseman CCIM, CREW
Phone: 504/587-1450
Fax: 504/587-1453
www.corp-realty.com

September 13, 2013