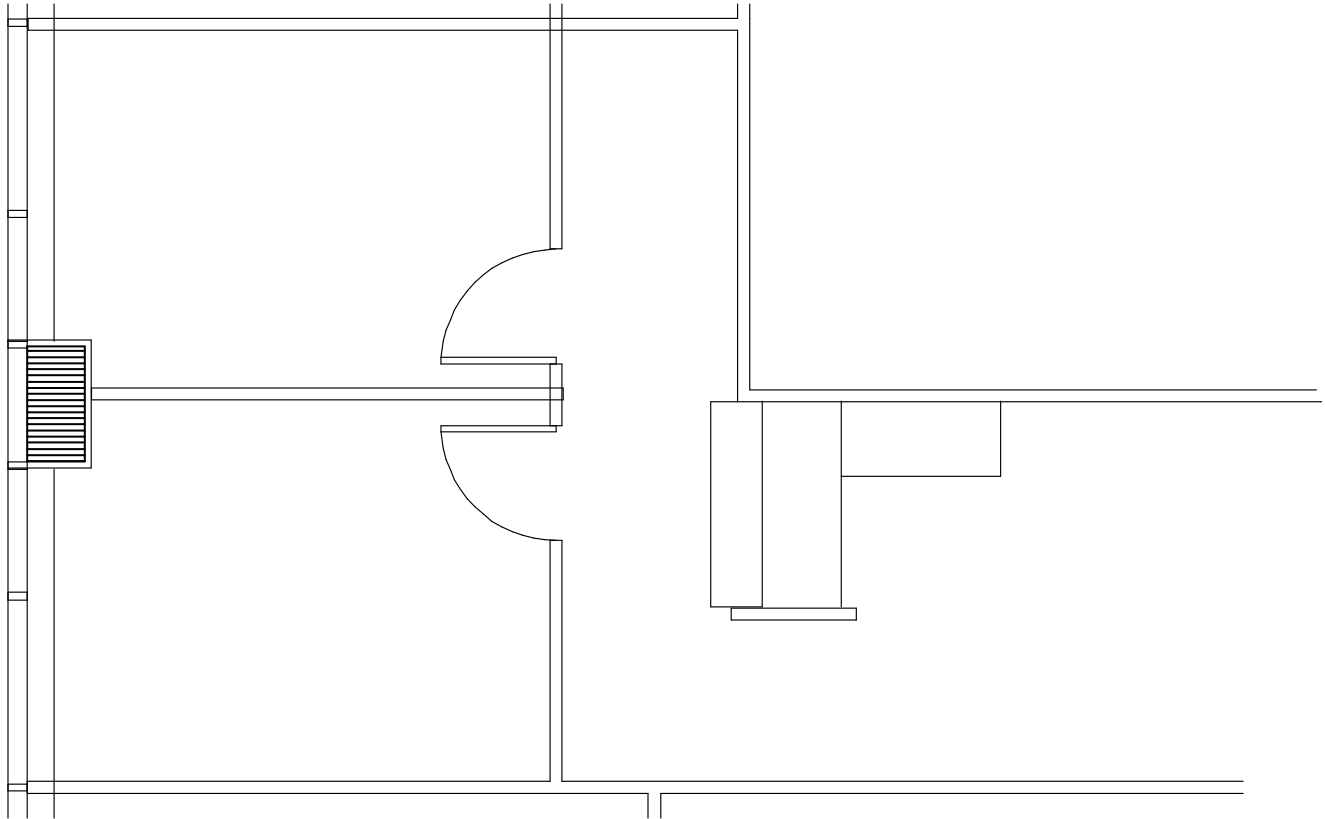


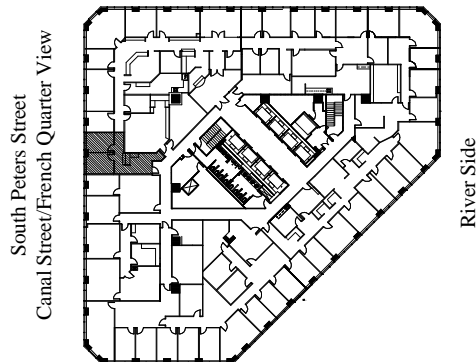
ONE CANAL PLACE

365 Canal Street
New Orleans, Louisiana 70130

FLOOR 27 SUITE #2747 - 641 RSF



Iberville Street (Downriver View)



Canal Street UpRiver View

CONTACT:



CORPORATE REALTY

Andrea A. Huseman CCIM, CREW
Phone: 504/587-1450
Fax: 504/587-1453
www.corp-realty.com