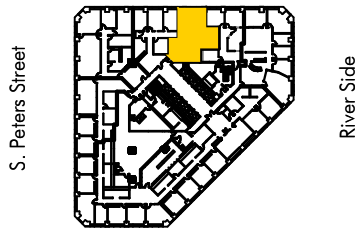


Floor 26 Suite 2625 1,346 rsf



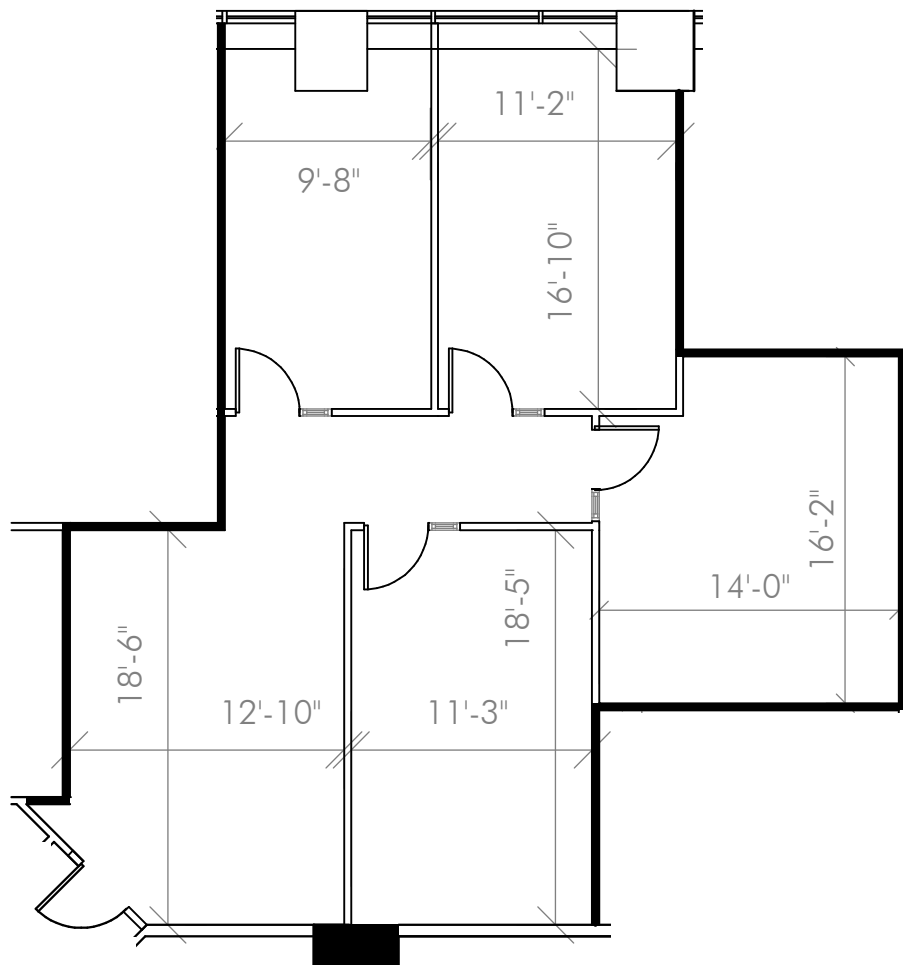
One Canal Place
365 Canal Street
New Orleans, LA 70130

Iberville Street (downriver view)



Canal Street (upriver view)

DIMENSIONS ARE APPROXIMATE



FOR LEASING INQUIRIES, PLEASE CONTACT:



Andrea Arons Huseman, CCIM
Corporate Realty
504.587.1450
ahuseman@corp-realty.com

December 2020

201 St. Charles Avenue | Suite 4411 | New Orleans, LA 70170 | 504.581.5005 | Licensed in Louisiana