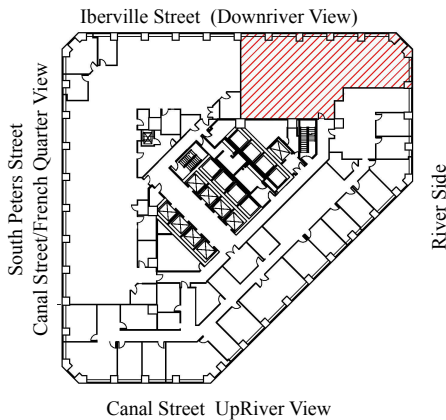
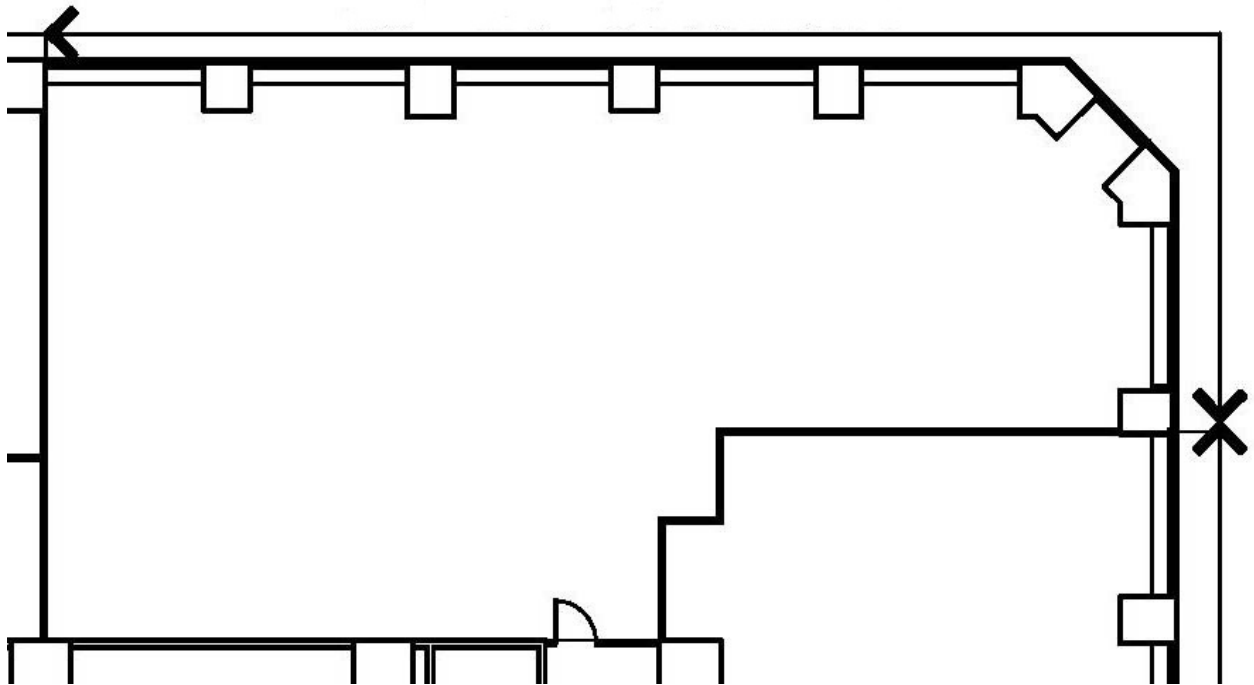


# ONE CANAL PLACE

365 Canal Street

New Orleans, Louisiana 70130

FLOOR 10 SUITE #1030 - 3,298 RSF



## CONTACT:



CORPORATE REALTY

Andrea A. Huseman CCIM, CREW

Phone: 504/587-1450

Fax: 504/587-1453

[www.corp-realty.com](http://www.corp-realty.com)

Oct 23, 2009