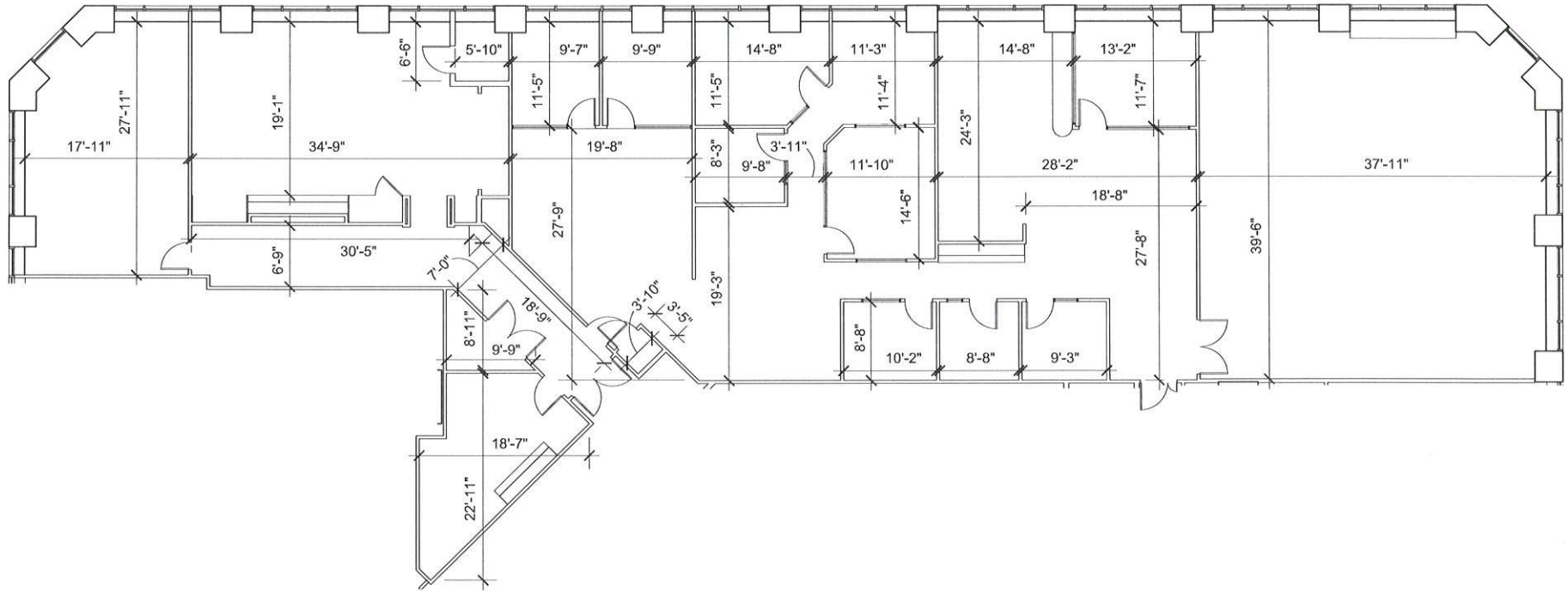


ONE CANAL PLACE

365 Canal Street
New Orleans, Louisiana 70130

Floor 22, Suite 2200
7,562 RSF



Mathes Brierre ARCHITECTS

A Professional Architectural Corporation
in Continuous Practice Since 1890

Place St. Charles
201 St. Charles Avenue, Floor 41
New Orleans, Louisiana 70170-4100
(504) 586-9303 Fax (504) 582-1305
www.mathesbrierre.com

October 15, 2018

CONTACT:



Andrea A. Huseman CCIM, CREW
Phone: (504) 587-1450
Fax: (504) 587-1453
www.corp-realty.com

