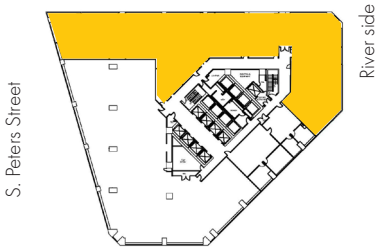


**Floor 4**  
**Suite 400**  
**10,555 rsf**

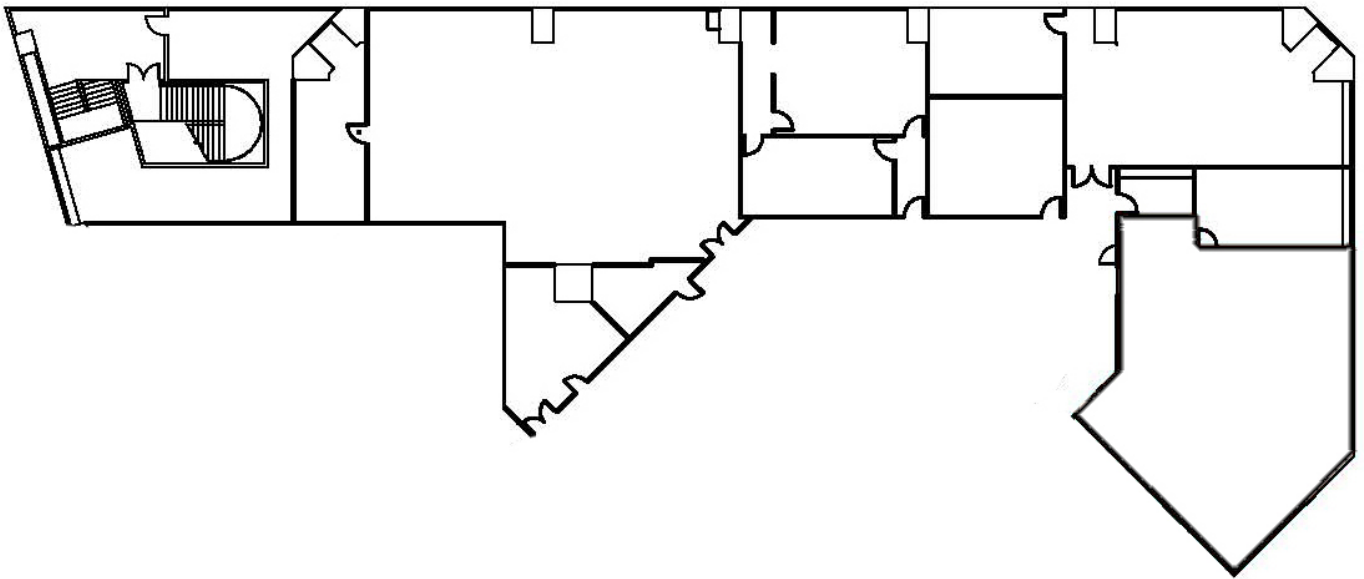


**One Canal Place**  
365 Canal Street  
New Orleans, LA 70130

Iberville Street (downriver view)



Canal Street (upriver view)



**FOR LEASING INQUIRIES, PLEASE CONTACT:**



**Andrea Arons Huseman, CCIM**  
Corporate Realty  
504.587.1450  
ahuseman@corp-realty.com